

Size 34 (86mm) Series

The size 34 hybrid precision linear actuator is in big size, high power, with best performance, which capable of 2270N of continuous thrust.



Motor Characteristics

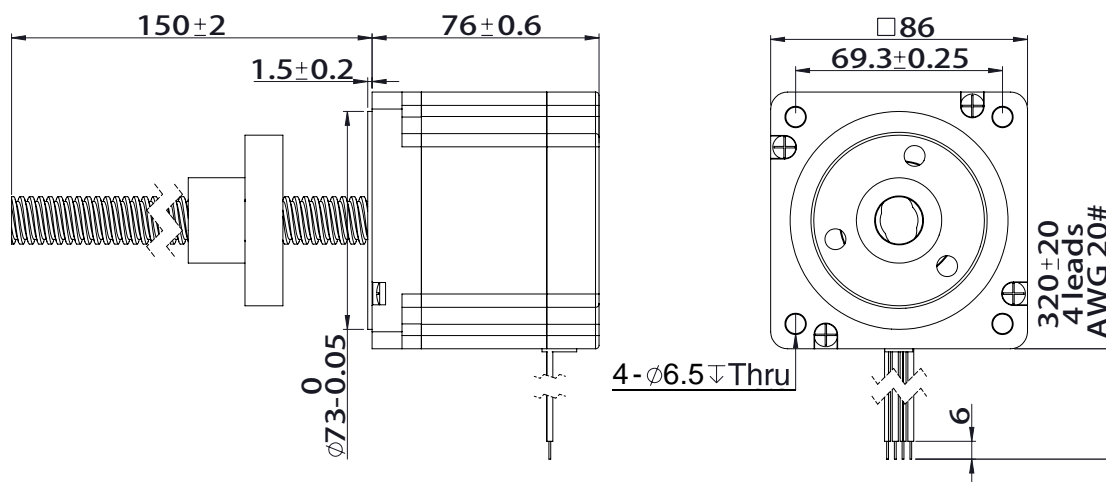
Motor	Voltage (V)	Current (A)	Resistance (Ω)	Inductance (mH)	Weight (g)	Lead Wire No.	Motor Length (mm)
34-2113	12.0	1.3	9.2	71.0	2370	4	76
34-2130	5.7	3.0	1.9	15.0	2370	4	76
34-2155	2.85	5.5	0.52	4.5	2370	4	76

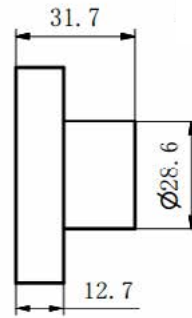
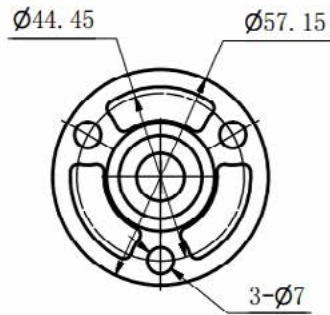
Available Lead Screw and Travel per Step

Screw Dia. (inch)	Screw Dia. (mm)	Lead (inch)	Lead (mm)	Lead Code	Travel Per Step @ 1.8 deg (mm)*	Travel Per Step @ 0.9 deg (mm)*
0.625	15.875	0.1	2.54	K	0.0127	0.0064
0.625	15.875	0.125	3.175	L	0.0159	0.0079
0.625	15.875	0.2	5.08	R	0.0254	0.0127
0.625	15.875	0.25	6.35	S	0.0318	0.0159
0.625	15.875	0.5	12.7	Y	0.0635	0.0318
0.625	15.875	1.0	25.4	Z	0.127	0.0635

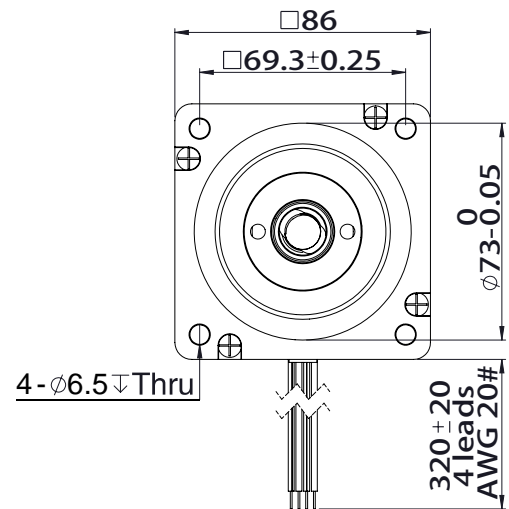
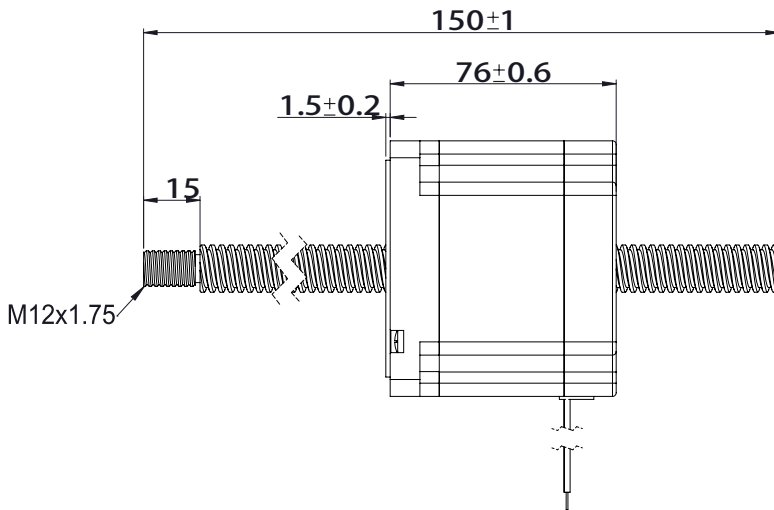
Value truncated

Dimensional Drawings External Actuator



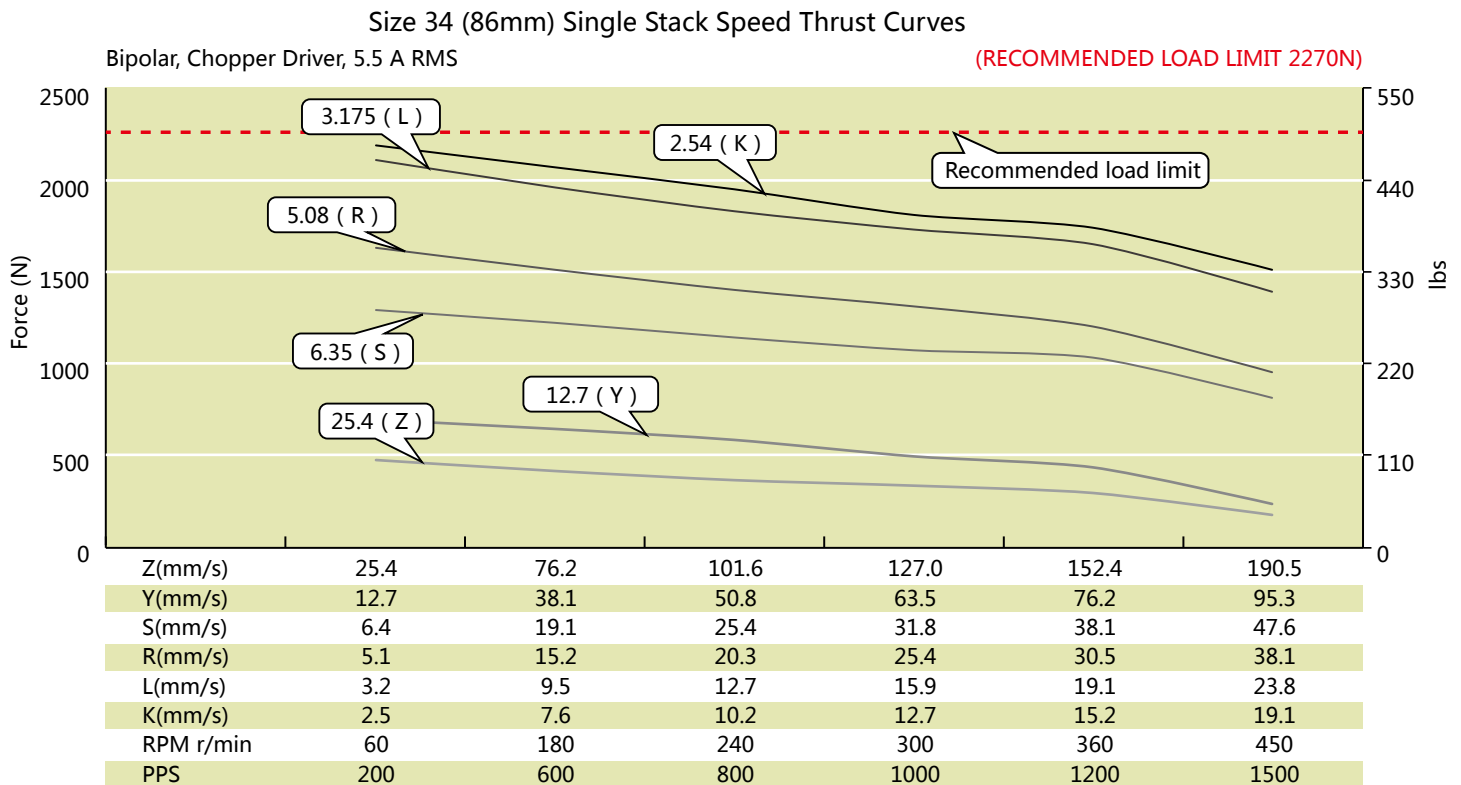


Non-Captive Actuator



Size 34 (86mm) Series

Size 34 (86mm) Performance Curves



TEST CONDITION: