

Size 23 (57mm) Series

The size 23 hybrid precision linear actuator is with high performance and longer working cycle, which could be applied with high request of force, it is capable of 910N.



Motor Characteristics

Motor	Voltage (V)	Current (A)	Resistance (Ω)	Inductance (mH)	Weight (g)	Lead Wire No	Motor Length (mm)
23-2110	6.4	1.0	6.4	16.4	585	4	45
23-2120	3.2	2.0	1.6	4.1	585	4	45
23-2130	2.1	3.0	0.8	1.7	585	4	45
23-2210	10.8	1.0	11.5	32.0	880	4	65
23-2225	4.2	2.5	2.0	5.2	880	4	65
23-2240	2.4	4.0	0.7	2.0	880	4	65

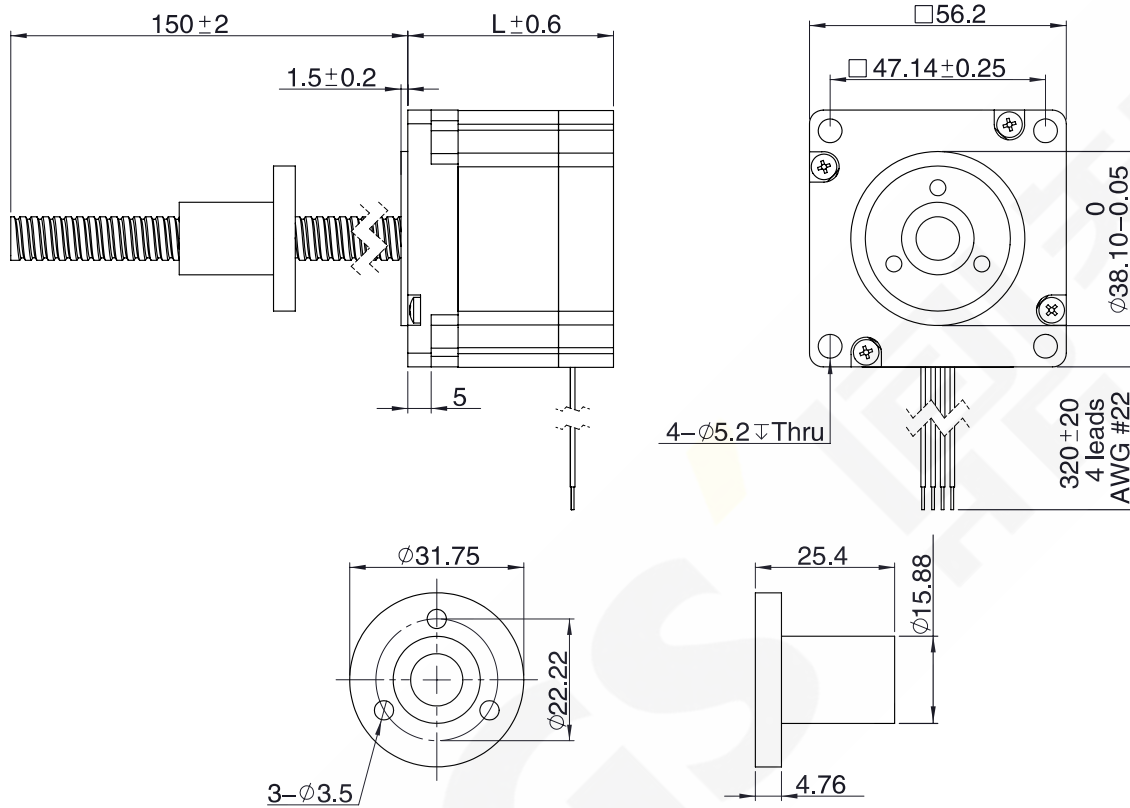
Available Lead Screw and Travel per Step

Screw Dia. (inch)	Screw Dia. (mm)	Lead (inch)	Lead (mm)	Lead Code	Travel Per Step @ 1.8 deg (mm)*	Travel Per Step @ 0.9 deg (mm)*
0.315	10.000	0.079	2.0000	MG	0.0100	0.0050
0.315	8.000	0.158	4.0000	MM	0.0200	0.0100
0.315	8.000	0.315	8.0000	MT	0.0400	0.0200
0.375	9.525	0.025	0.6350	A	0.0030	0.0016
0.375	9.525	0.050	1.2700	D	0.0060	0.0032
0.375	9.525	0.062	1.5875	F	0.0080	0.0040
0.375	9.525	0.083	2.1082	H	0.0110	0.0053
0.375	9.525	0.100	2.5400	K	0.0120	0.0064
0.375	9.525	0.125	3.1750	L	0.0150	0.0079
0.375	9.525	0.167	4.2418	P	0.0210	0.0106
0.375	9.525	0.200	5.0800	R	0.0250	0.0127
0.375	9.525	0.250	6.3500	S	0.0310	0.0159
0.375	9.525	0.375	9.5250	V	0.0470	0.0238
0.375	9.525	0.384	9.7536	W	0.0480	0.0244
0.375	9.525	0.400	10.1600	X	0.0510	0.0254
0.375	9.525	0.500	12.7000	Y	0.0630	0.0318
0.375	9.525	1.000	25.4000	Z	0.1270	0.0635

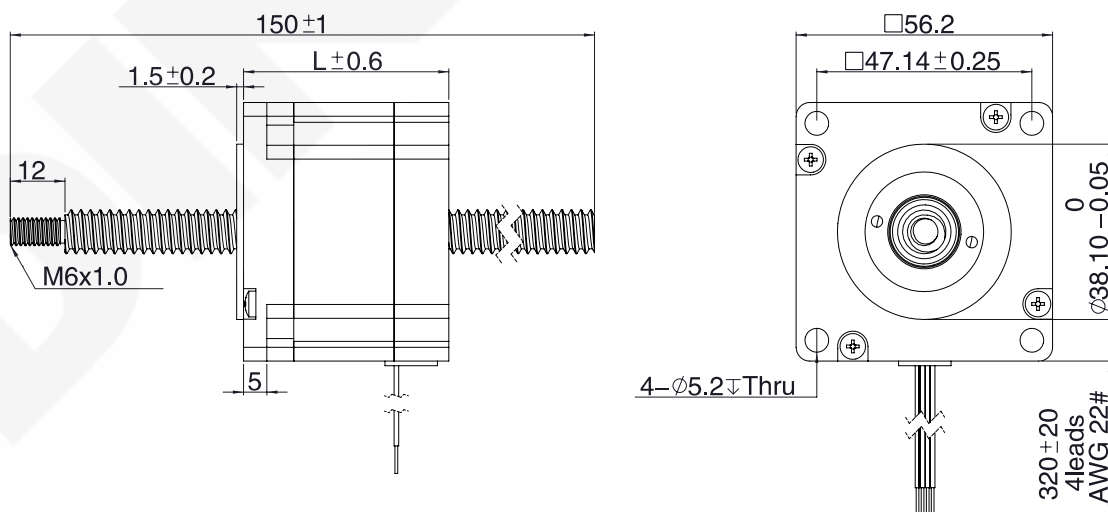
Value truncated

Dimensional Drawings

External Actuator



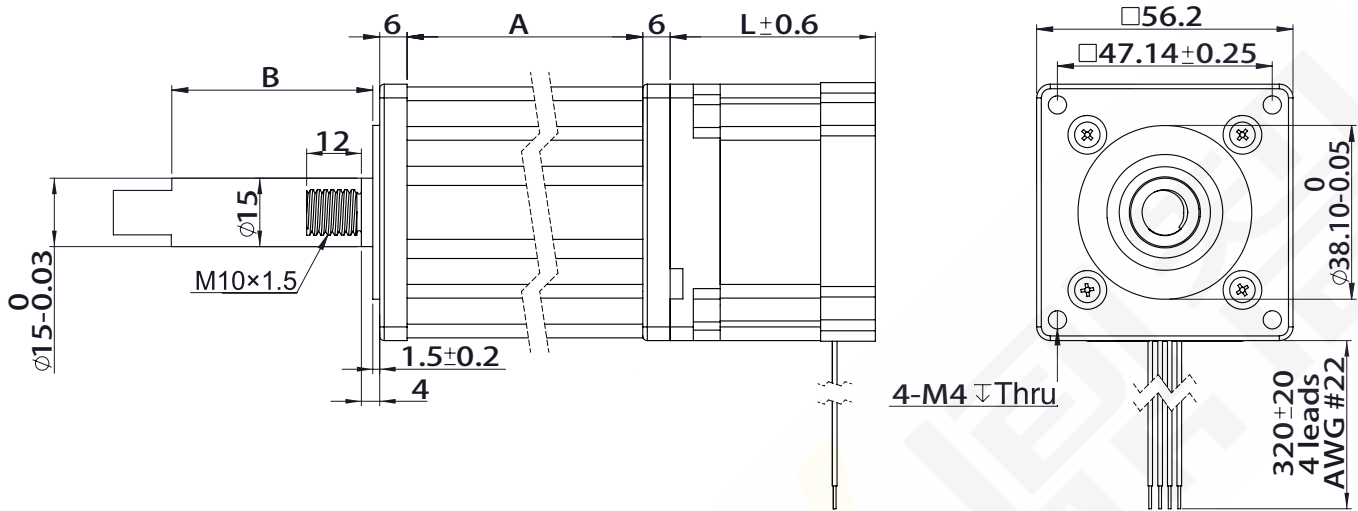
Non-Captive Actuator



NOTE: All drawings are First Angle Projection - ISO Standard. (3D Models are available).

Size 23 (57mm) Series

Captive Actuator

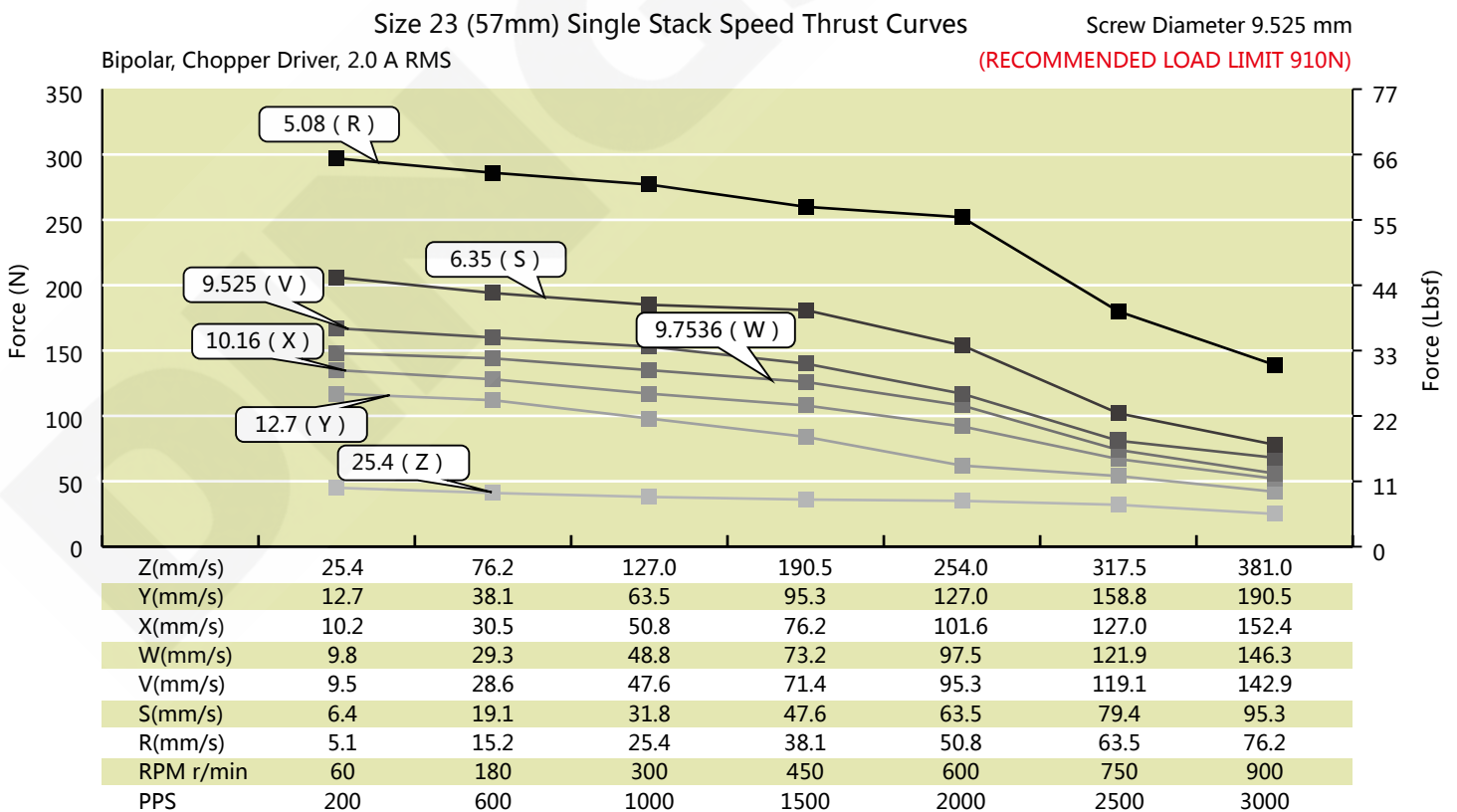
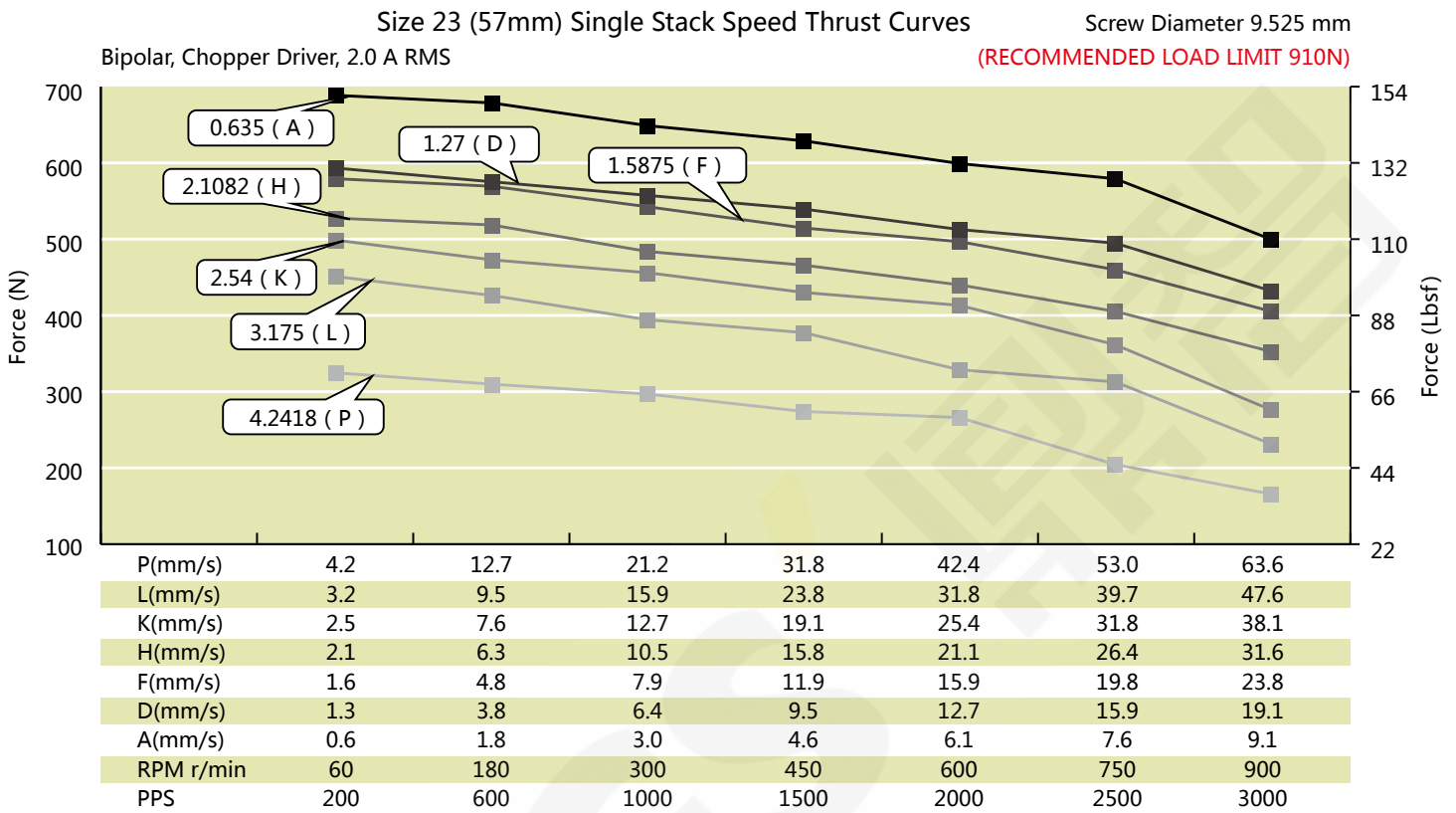


● Stroke Specification

Stroke B inch (mm)		A (mm)	L (mm)	
0.50	(12.70)	45.70	Single Stack Motor 45mm	Double Stack Motor 65mm
0.75	(19.05)	52.05		
1.00	(25.40)	58.40		
1.25	(31.80)	64.80		
1.50	(38.10)	71.10		
2.00	(50.80)	83.80		
2.50	(63.50)	96.50		

Size 23 (57mm) Series

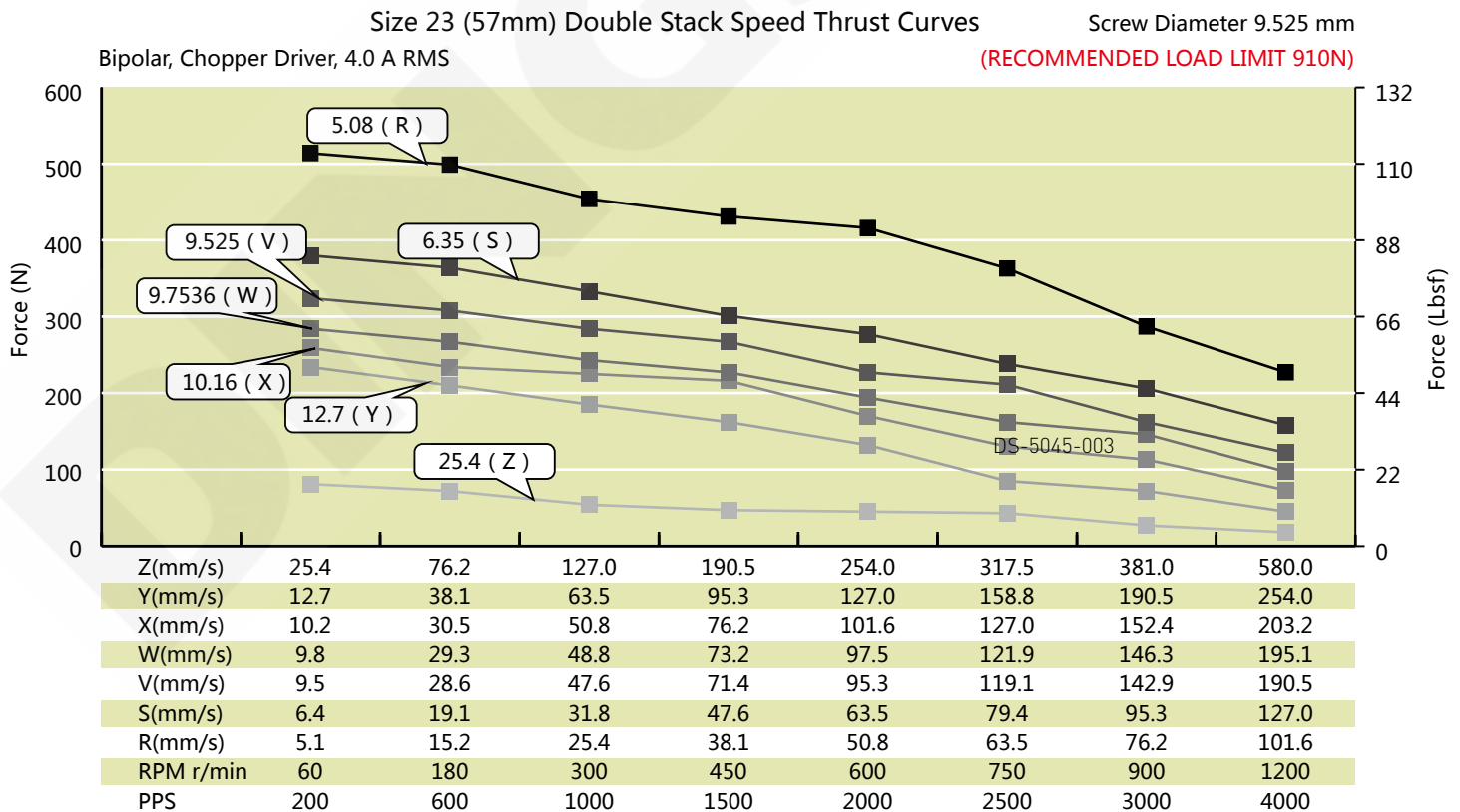
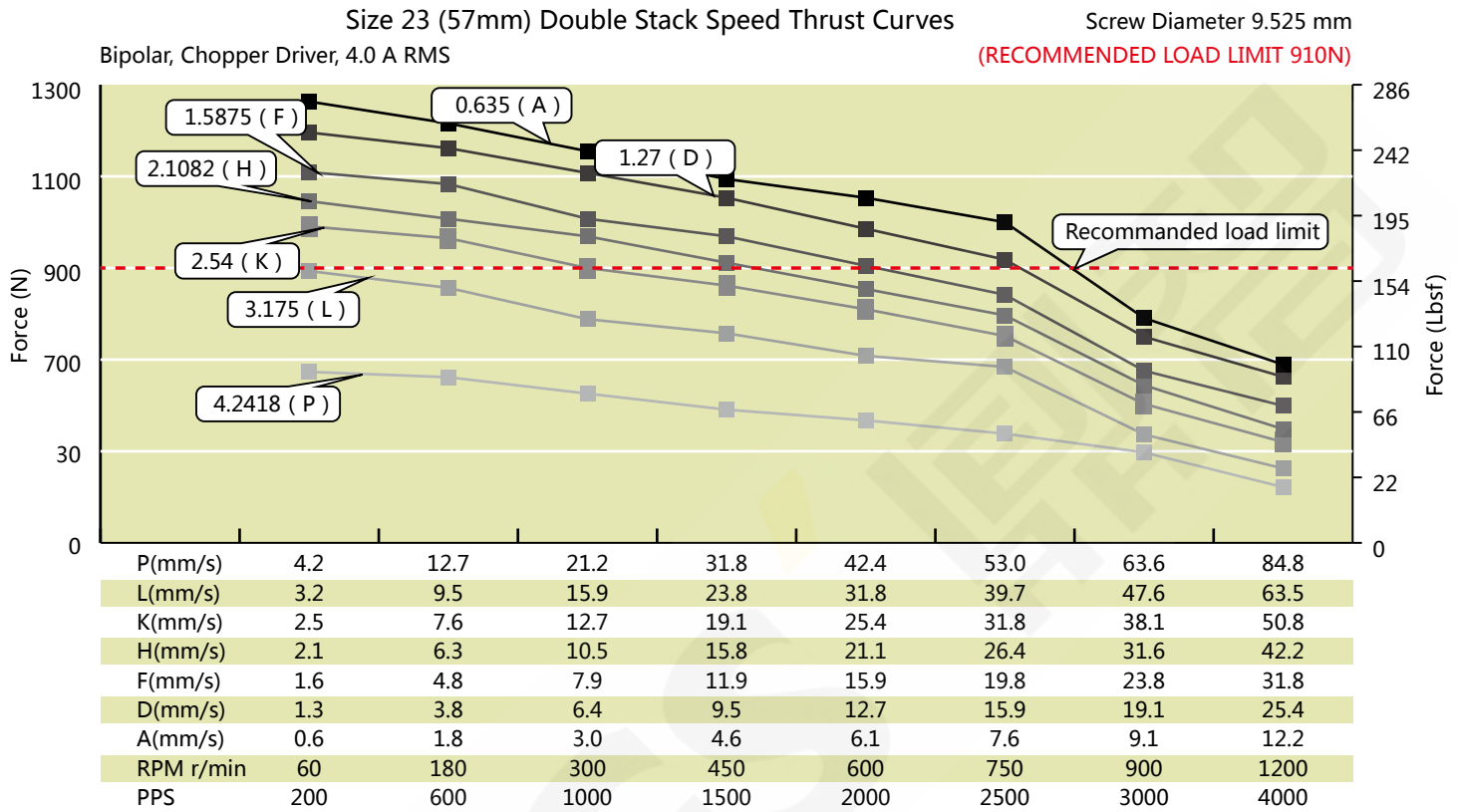
Size 23 (57mm) Performance Curves



TEST CONDITION:

Testing Voltage: 40VDC, Driver Model: DS-5045-003, at rated current (rms). Motor's thrust will be changed with different voltage and driver. 50% thrust margin is recommended.

Size 23 (57mm) Series



TEST CONDITION:

Testing Voltage: 40VDC, Driver Model: DS-5045-003, at rated current (rms). Motor's thrust will be changed with different voltage and driver. 50% thrust margin is recommended.